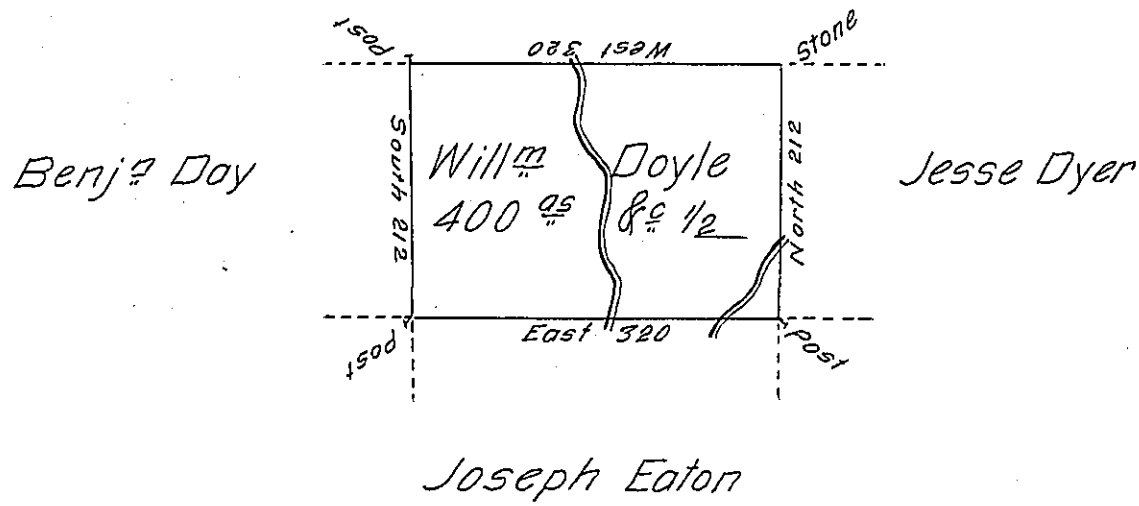


Vacant



Draft of a tract of land called _____ Situate on the north Side of Lehi Join-
 ing Lands Surveyed for Joseph Eaton & others in Luzerne County containing
 four Hundred acres & allowance of Six P. Cent for roads &c. Surveyed for
 William Doyle the 22^d Day of Nov^r 1792 in pursuance of a Warrant dated
 the 29th Day of October 1792 by

W^m Gray D.S.

Daniel Brodhead Esq^r }
 Surv^r Genl }

IN TESTIMONY that the above is a copy of the original remaining on file in
 the Department of Internal Affairs of Pennsylvania, made
 conformably to an Act of Assembly approved the 16th day of
 February, 1833, I have hereunto set my Hand and caused
 the Seal of said Department to be affixed at Harrisburg,
 this eighteenth day of July 1904

Isaac P. Brown
 Secretary of Internal Affairs.